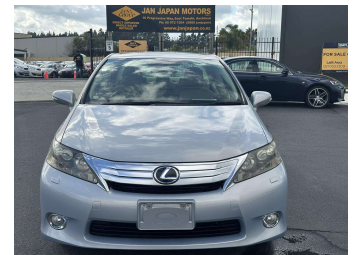


# 2009 Lexus HS250H Hybrid



**Purchase Price** **\$10,200**

Includes GST  
Excludes on-road costs of \$595

Finance may be available on this vehicle. Ask one of our friendly staff for more information.

Gain peace of mind with Mechanical Breakdown Insurance. **Ask us how.**

- Top features**
- » ABS Brakes
  - » Air Conditioning
  - » Alloys
  - » Central Locking
  - » Electric Mirrors
  - » Electric Windows
  - » Fog Lights
  - » Folding Side Mirrors
  - » Keyless Entry
  - » Power Steering
  - » Push Start
  - » Reversing Camera
  - » Spoiler
  - » Winker Mirror

Body Style  
**4 door, Sedan**

Odometer  
**104,828 km**

Engine  
**2400 cc, Hybrid**

Fuel Type  
**Hybrid**

Transmission  
**Automatic, 2WD**

Wheels  
-

VIN  
**7AT0B01CX23008742**

Interior  
**Gray**

Safety



Based on 2023 VSRR rating

Reg No.

-

Ext Colour  
**Light Blue**

History

-

Seats  
**5 seats**

CO2 Emissions  
**★★★★☆**  
**134 grams/km**

Energy Economy  
**★★★★☆☆**

**Annual fuel cost of \$2,270**  
**5.8L per 100km**

Cost per year is an estimate based on petrol price of \$2.80 per litre and an average distance of 14000 km. Emissions and Energy Economy figures standardised to 3P WLTP.

**Stock ID: 953217**



Jan Japan - East Tamaki | Phone 09 972 1204 | Email sales@janjapan.co.nz  
10 Progressive Way, East Tamaki, Auckland 2016, New Zealand  
www.janjapan.co.nz

**★★★★☆**  
4.29 | 295 reviews