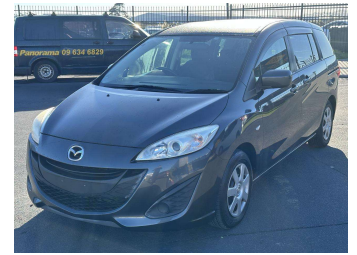


2013 Mazda Premacy 20C



Purchase Price **\$8,900**

Includes GST
Excludes on-road costs of \$595

Finance may be available on this vehicle. Ask one of our friendly staff for more information.

Gain peace of mind with Mechanical Breakdown Insurance. **Ask us how.**

- Top features**
- » ABS Brakes
 - » Air Conditioning
 - » Buttons
 - » Car Stereo
 - » Central Locking
 - » Climate Control
 - » Dark Interior
 - » Digital Dash
 - » Electric Windows
 - » Folding Side Mirrors
 - » Keyless Entry
 - » Power Steering
 - » Reversing Camera
 - » Touch Screen Stereo
 - » Wheel Covers
 - » Winker Mirror

Body Style
5 door, Van

Odometer
62,108 km

Engine
2000 cc

Fuel Type
Petrol


Transmission
Automatic, 2WD

Wheels
Hubcap

VIN
7AT0C133X24115236

Interior
Gray

Safety



Based on 2023 VSRR rating

Reg No.
-

Ext Colour
Gray

History
-

Seats
7 seats, Fabric

CO2 Emissions
★★★★☆
163 grams/km


Energy Economy
★★★★☆☆
Annual fuel cost of \$2,740
7L per 100km

Cost per year is an estimate based on petrol price of \$2.80 per litre and an average distance of 14000 km. Emissions and Energy Economy figures standardised to 3P WLTP.

Stock ID: 1035840



Jan Japan - East Tamaki | Phone 09 972 1204 | Email sales@janjapan.co.nz
10 Progressive Way, East Tāmaki, Auckland 2016, New Zealand
www.janjapan.co.nz



★★★★★
4.32 | 283 reviews