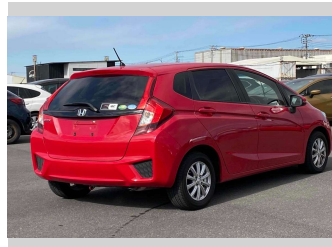


2013 Honda Fit 13G-L PACKAGE



Purchase Price **\$9,900**

Includes GST
Excludes on-road costs of \$595

Finance may be available on this vehicle. Ask one of our friendly staff for more information.

Gain peace of mind with Mechanical Breakdown Insurance. **Ask us how.**

- Top features**
- » ABS Brakes
 - » Air Conditioning
 - » Alloys
 - » CD Player
 - » Electric Windows
 - » Keyless Entry
 - » Power Steering
 - » Push Start
 - » Winker Mirror

Body Style
5 door, Hatchback

Odometer
26,640 km

Engine
1300 cc

Fuel Type
Petrol

Transmission
Automatic, 2WD

Wheels
-

VIN
-

Interior
Gray

Safety
-

Reg No.

-

Ext Colour

Red

History

-

Seats

5 seats

CO2 Emissions

-

Energy Economy

-

Stock ID: 14979



JAN JAPAN MOTORS

Jan Japan - North Shore | Phone 09 553 8134 | Email wairau@janjapan.co.nz
96 Wairau Road, Wairau Valley, Auckland 0627, New Zealand
www.janjapan.co.nz