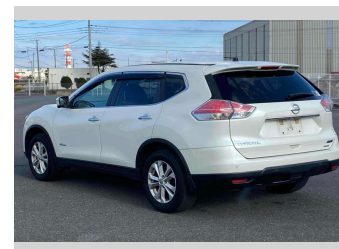
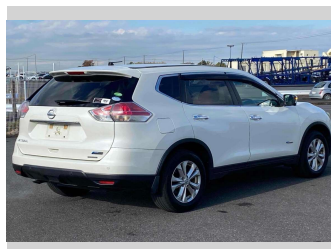
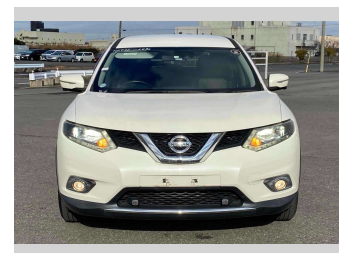
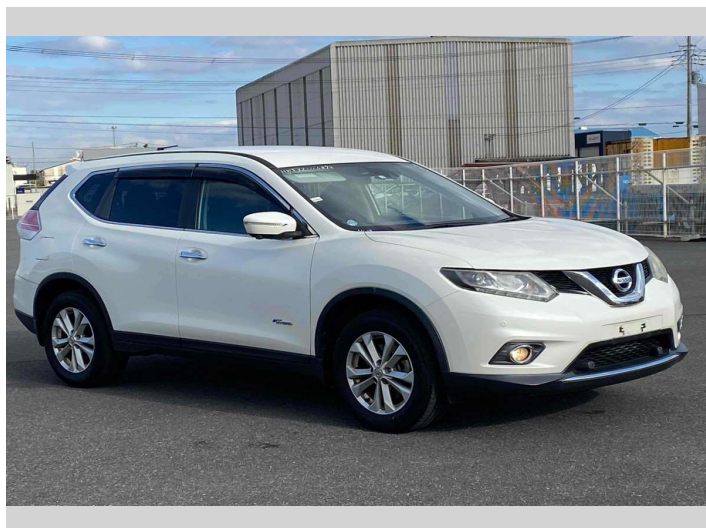


2016 Nissan X-Trail 20X Hybrid Emergency Brake



Purchase Price **\$18,900**

Includes GST
Excludes on-road costs of \$595

Finance may be available on this vehicle. Ask one of our friendly staff for more information.

Gain peace of mind with Mechanical Breakdown Insurance. **Ask us how.**

- Top features**
- » ABS Brakes
 - » Air Conditioning
 - » Alarm
 - » Alloys
 - » Buttons
 - » Car Stereo
 - » Central Locking
 - » Cruise Control
 - » Dark Interior
 - » Digital Dash
 - » Electric Mirrors
 - » Electric Windows
 - » Face Lift Model
 - » Fog Lights
 - » Folding Side Mirrors
 - » Keyless Entry
 - » Lane Departure Warning...
 - » Parking sensors

Body Style
5 door, SUV / 4x4

Odometer
85,372 km

Engine
2000 cc, Hybrid

Fuel Type
Hybrid

Transmission
Automatic, 4WD

Wheels
-

VIN
-

Interior
Gray, Leather

Safety



Based on 2024 UCSR rating for 14-22 models

Reg No.

-

Ext Colour
Pearl White

History

-

Seats
5 seats, Leather

CO2 Emissions
★★★★☆
137 grams/km

Energy Economy
★★★★☆☆

Annual fuel cost of \$2,310
5.9L per 100km

Cost per year is an estimate based on petrol price of \$2.80 per litre and an average distance of 14000 km. Emissions and Energy Economy figures standardised to 3P WLTP.

Stock ID: 14718