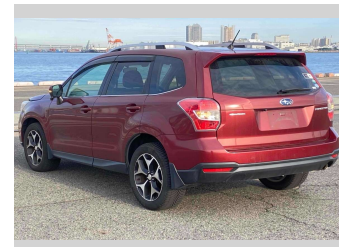
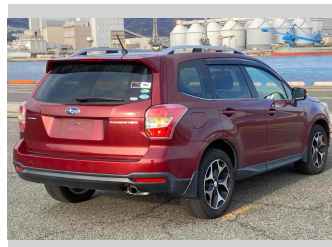
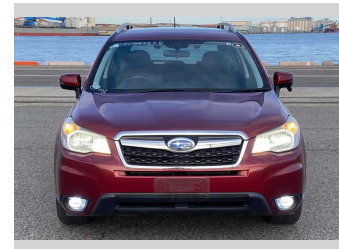
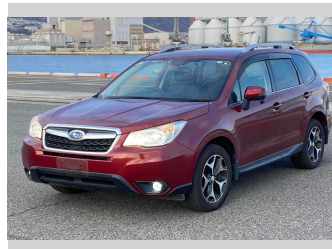


# 2014 Subaru Forester 2.0I-L EYESIGHT



**Purchase Price**

**\$14,780**

Includes GST  
Excludes on-road costs of \$595

Finance may be available on this vehicle. Ask one of our friendly staff for more information.

Gain peace of mind with Mechanical Breakdown Insurance. **Ask us how.**

- Top features**
- » ABS Brakes
  - » Air Conditioning
  - » Alloys
  - » Car Stereo
  - » CD Player
  - » Cruise Control
  - » Electric Windows
  - » Fog Lights
  - » Heated Seats
  - » Keyless Entry
  - » Lane Keep Assist
  - » Paddle Shift
  - » Power Seats
  - » Power Steering
  - » Pre-Collision System
  - » Push Start
  - » Spoiler
  - » Winker Mirror

Body Style  
**5 door, SUV / 4x4**

Odometer  
**82,819 km**

Engine  
**2000 cc**

Fuel Type  
**Petrol**

Transmission  
**Automatic, 4WD**

Wheels  
-

VIN  
-

Interior  
**Gray**

Safety  
-

Reg No.  
-

Ext Colour  
**Red Metallic**

History  
-

Seats  
**5 seats**

CO2 Emissions  
-

Energy Economy  
-

**Stock ID: 15064**



Jan Japan - Wholesale | Phone 09 972 1204 | Email sales@janjapan.co.nz  
10 Progressive Way, East Tāmaki, Auckland 2016, New Zealand  
www.janjapan.co.nz

4.27 | 329 reviews