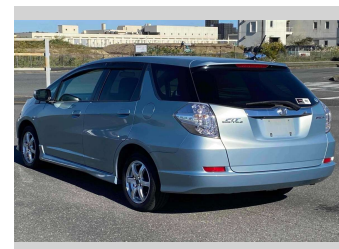
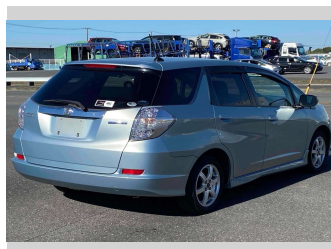
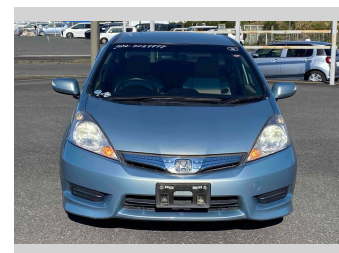
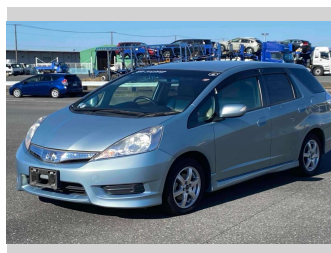
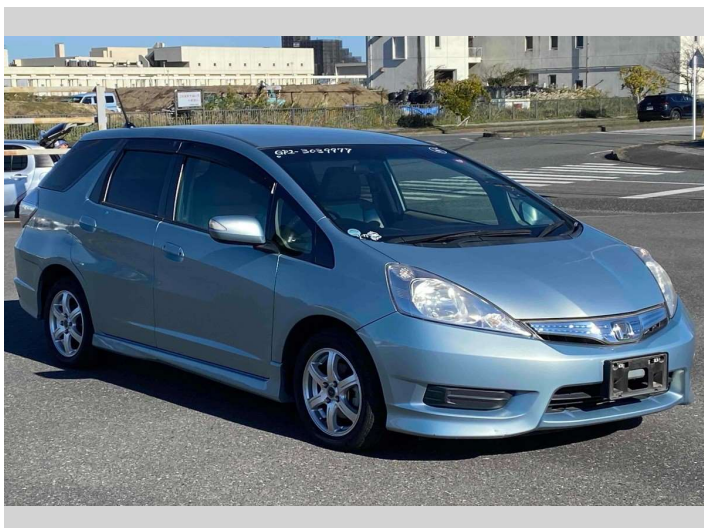


2012 Honda Fit Shuttle Hybrid



Purchase Price **POA**

Includes GST
Excludes on-road costs of \$595

Finance may be available on this vehicle. Ask one of our friendly staff for more information.

Gain peace of mind with Mechanical Breakdown Insurance. **Ask us how.**

- Top features**
- » ABS Brakes
 - » Air Conditioning
 - » Electric Windows
 - » Power Steering
 - » Spoiler
 - » Winker Mirror

Body Style
5 door, Station Wagon

Odometer
92,080 km

Engine
1300 cc, Hybrid

Fuel Type
Hybrid

Transmission
Automatic, 2WD

Wheels
-

VIN
-

Interior
Gray

Safety
-

Reg No.
-

Ext Colour
Light Blue

History
-

Seats
5 seats

CO2 Emissions
-

Energy Economy
-

Stock ID: 14467



Jan Japan - East Tamaki | Phone 09 972 1204 | Email sales@janjapan.co.nz
10 Progressive Way, East Tāmaki, Auckland 2016, New Zealand
www.janjapan.co.nz