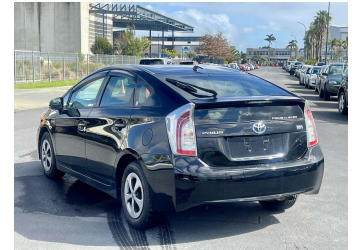
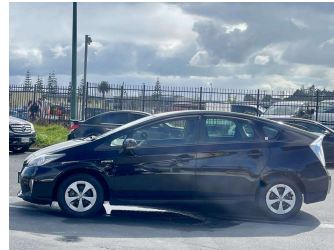
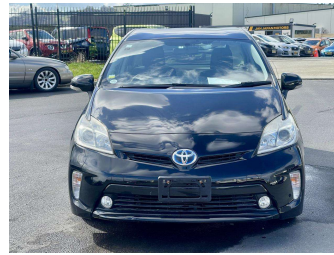


2015 Toyota Prius S



Purchase Price

\$11,800

Includes GST
Excludes on-road costs of \$595

Finance may be available on this vehicle. Ask one of our friendly staff for more information.

Gain peace of mind with Mechanical Breakdown Insurance. **Ask us how.**

- Top features**
- » ABS Brakes
 - » Air Conditioning
 - » Alloys
 - » AUX Input
 - » Car Stereo
 - » Central Locking
 - » Climate Control
 - » Dark Interior
 - » Digital Dash
 - » Electric Mirrors
 - » Electric Windows
 - » Fog Lights
 - » Folding Side Mirrors
 - » Keyless Entry
 - » Power Steering
 - » Push Start
 - » Reversing Camera
 - » Spoiler

Body Style
5 door, Hatchback

Odometer
105,453 km

Engine
1800 cc, Hybrid

Fuel Type
Hybrid

Transmission
Automatic, 2WD

Wheels
Factory Alloys

VIN
7AT0H637X24764676

Interior
Gray

Safety



Based on 2023 UCSR rating for 09-16 models

Reg No.

-

Ext Colour
Black

History

-

Seats
5 seats, Fabric

CO2 Emissions
★★★★☆
98 grams/km

Energy Economy
★★★★☆

Annual fuel cost of \$1,650
4.2L per 100km

Cost per year is an estimate based on petrol price of \$2.80 per litre and an average distance of 14000 km. Emissions and Energy Economy figures standardised to 3P WLTP.

Stock ID: 1077514



Jan Japan - East Tamaki | Phone 09 972 1204 | Email sales@janjapan.co.nz
10 Progressive Way, East Tāmaki, Auckland 2016, New Zealand
www.janjapan.co.nz

