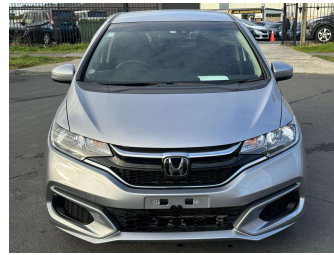


# 2019 Honda Fit Hybrid



**Purchase Price**

**\$13,200**

Includes GST  
Excludes on-road costs of \$595

Finance may be available on this vehicle. Ask one of our friendly staff for more information.

Gain peace of mind with Mechanical Breakdown Insurance. **Ask us how.**

- Top features**
- » ABS Brakes
  - » Air Conditioning
  - » Alarm
  - » Alloys
  - » Buttons
  - » Car Stereo
  - » Central Locking
  - » Cruise Control
  - » Dark Interior
  - » Digital Dash
  - » Electric Mirrors
  - » Electric Windows
  - » Folding Side Mirrors
  - » Keyless Entry
  - » Lane Departure Warning...
  - » Lane Keep Assist
  - » Parking Sensors
  - » Power Steering

Body Style  
**5 door, Hatchback**

Odometer  
**91,477 km**

Engine  
**1500 cc, Hybrid**

Fuel Type  
**Hybrid**

Transmission  
**Automatic, 2WD**

Wheels  
**Hubcap**

VIN  
**7AT08G2YX24343351**

Interior  
**Gray**

Safety



Based on 2023 UCSR rating for 14-20 models

Reg No.

-

Ext Colour  
**Silver**

History

-

Seats  
**5 seats, Fabric**

CO2 Emissions  
**★★★★☆**  
**91 grams/km**

Energy Economy  
**★★★★☆**

**Annual fuel cost of \$1,490**  
**3.8L per 100km**

Cost per year is an estimate based on petrol price of \$2.80 per litre and an average distance of 14000 km. Emissions and Energy Economy figures standardised to 3P WLTP.

**Stock ID: 1078683**



Jan Japan - East Tamaki | Phone 09 972 1204 | Email sales@janjapan.co.nz  
10 Progressive Way, East Tāmaki, Auckland 2016, New Zealand  
www.janjapan.co.nz

