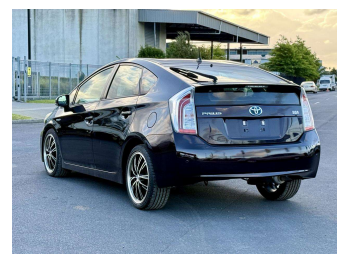
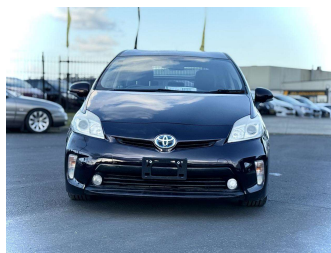


# 2012 Toyota Prius S



**Purchase Price** **\$10,300**

Includes GST  
Excludes on-road costs of \$595

Finance may be available on this vehicle. Ask one of our friendly staff for more information.

Gain peace of mind with Mechanical Breakdown Insurance. **Ask us how.**

- Top features**
- » ABS Brakes
  - » Air Conditioning
  - » Alloys
  - » AUX Input
  - » Car Stereo
  - » Central Locking
  - » Dark Interior
  - » Digital Dash
  - » Electric Mirrors
  - » Electric Windows
  - » Fog Lights
  - » Folding Side Mirrors
  - » Keyless Entry
  - » Parking Sensors
  - » Power Steering
  - » Push Start
  - » Reversing Camera
  - » Spoiler

Body Style  
**5 door, Hatchback**

Odometer  
**106,025 km**

Engine  
**1800 cc, Hybrid**

Fuel Type  
**Hybrid**

Transmission  
**Automatic, 2WD**

Wheels  
**Custom Alloys**

VIN  
**7AT0H637X24405950**

Interior  
**Gray**

Safety



Based on 2023 UCSR rating for 09-16 models

Reg No.

-

Ext Colour  
**Purple**

History

-

Seats  
**5 seats, Fabric**

CO2 Emissions  
**★★★★☆**  
**98 grams/km**

Energy Economy  
**★★★★☆**

**Annual fuel cost of \$1,650**  
**4.2L per 100km**

Cost per year is an estimate based on petrol price of \$2.80 per litre and an average distance of 14000 km. Emissions and Energy Economy figures standardised to 3P WLTP.

**Stock ID: 991516**



Jan Japan - East Tamaki | Phone 09 972 1204 | Email sales@janjapan.co.nz  
10 Progressive Way, East Tāmaki, Auckland 2016, New Zealand  
www.janjapan.co.nz

★★★★☆  
4.30 | 284 reviews