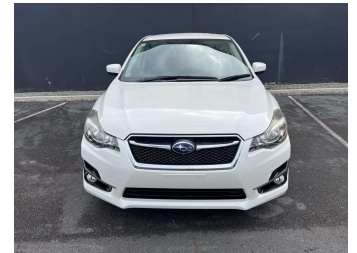
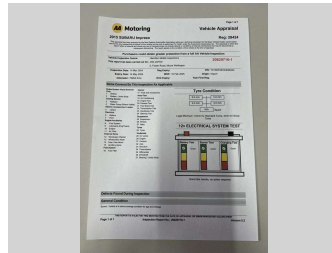


2015 Subaru Impreza 1.6I-L



Purchase Price **\$11,500**

Includes GST
Excludes on-road costs of \$595

Finance may be available on this vehicle. Ask one of our friendly staff for more information.

Gain peace of mind with Mechanical Breakdown Insurance. **Ask us how.**

- Top features**
- » ABS Brakes
 - » Air Conditioning
 - » Alloys
 - » Car Stereo
 - » Central Locking
 - » Dark Interior
 - » Electric Mirrors
 - » Electric Windows
 - » Fog Lights
 - » Folding Side Mirrors
 - » Power Steering
 - » Roof Rails
 - » Spoiler
 - » Touch Screen Stereo

Body Style
5 door, Hatchback

Odometer
75,852 km

Engine
1600 cc

Fuel Type
Petrol

Transmission
Automatic, 2WD

Wheels
-

VIN
7AT0GF09X23028424

Interior
Gray

Safety



Based on 2023 UCSR rating for 12-16 models

Reg No.

-

Ext Colour
White

History

-

Seats
5 seats

CO2 Emissions
★★★★☆
153 grams/km

Energy Economy
★★★★☆☆

Annual fuel cost of \$2,590
6.6L per 100km

Cost per year is an estimate based on petrol price of \$2.80 per litre and an average distance of 14000 km. Emissions and Energy Economy figures standardised to 3P WLTP.

Stock ID: 886129



Jan Motors Ltd | Phone 075950290 | Email sales@janmotors.co.nz
25 Commerce Street, Frankton, Hamilton 3204, New Zealand
www.janmotors.co.nz

