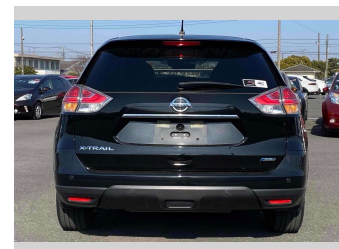
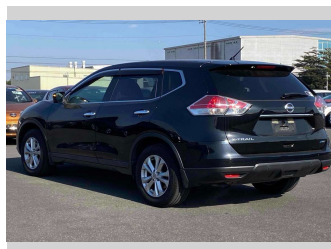
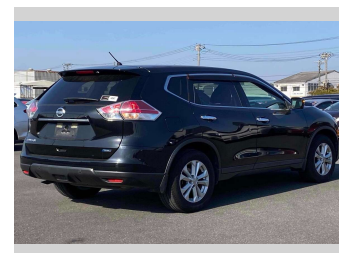


2014 Nissan X-Trail 20X Emergency Brake Package



Purchase Price **\$16,680**

Includes GST
Excludes on-road costs of \$595

Finance may be available on this vehicle. Ask one of our friendly staff for more information.

Gain peace of mind with Mechanical Breakdown Insurance. **Ask us how.**

- Top features**
- » 360 Camera
 - » ABS Brakes
 - » Air Conditioning
 - » Alloys
 - » Car Stereo
 - » CD Player
 - » Electric Windows
 - » Fog Lights
 - » Heated Seats
 - » Keyless Entry
 - » Parking sensors
 - » Power Steering
 - » Pre-Collision System
 - » Push Start
 - » Spoiler
 - » Winker Mirror

Body Style
5 door, SUV / 4x4

Odometer
66,476 km

Engine
2000 cc

Fuel Type
Petrol

Transmission
Automatic, 2WD

Wheels
-

VIN
-

Interior
Gray

Safety
-

Reg No.
-

Ext Colour
Black

History
-

Seats
7 seats

CO2 Emissions
-

Energy Economy
-

Stock ID: 15073



Jan Japan - Wholesale | Phone 09 972 1204 | Email sales@janjapan.co.nz
10 Progressive Way, East Tāmaki, Auckland 2016, New Zealand
www.janjapan.co.nz