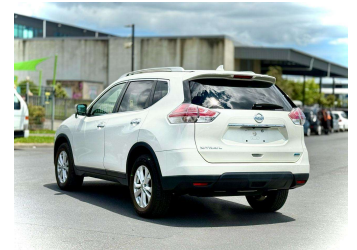
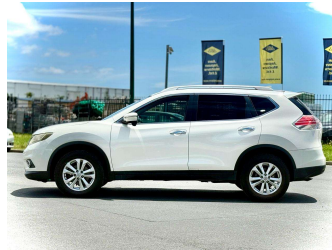
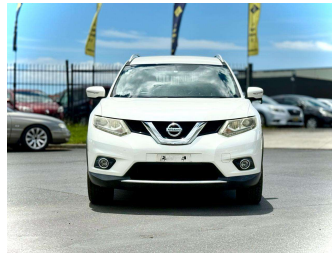


2015 Nissan X-Trail 20X



Purchase Price

\$14,900

Includes GST
Excludes on-road costs of \$595

Finance may be available on this vehicle. Ask one of our friendly staff for more information.

Gain peace of mind with Mechanical Breakdown Insurance. **Ask us how.**

Top features

- » ABS Brakes
- » Air Conditioning
- » Alloys
- » Buttons
- » Car Stereo
- » Central Locking
- » Climate Control
- » Dark Interior
- » Digital Dash
- » Electric Mirrors
- » Electric Windows
- » Fog Lights
- » Folding Side Mirrors
- » Heated Seats
- » Heated Seats
- » Keyless Entry
- » Lane Departure Warning...
- » Lane Keep Assist

Body Style

5 door, SUV / 4x4

Odometer

97,302 km

Engine

2000 cc

Fuel Type

Petrol

Transmission

Automatic, 2WD

Wheels

-

VIN

7AT0DH6LX24505126

Interior

Gray

Safety



Based on 2023 UCSR rating for 14-21 models

Reg No.

-

Ext Colour

Pearl White

History

-

Seats

5 seats, Leather

CO2 Emissions

★★★★☆

162 grams/km

Energy Economy

★★★☆☆

Annual fuel cost of \$2,700

6.9L per 100km

Cost per year is an estimate based on petrol price of \$2.80 per litre and an average distance of 14000 km. Emissions and Energy Economy figures standardised to 3P WLTP.

Stock ID: 1107472



Jan Japan - East Tamaki | Phone 09 972 1204 | Email sales@janjapan.co.nz
10 Progressive Way, East Tamaki, Auckland 2016, New Zealand
www.janjapan.co.nz



★★★★★
4.30 | 287 reviews