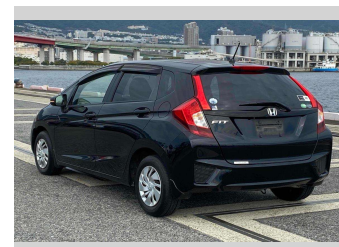
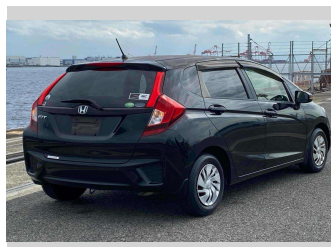
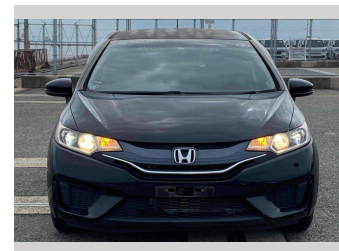


2013 Honda Fit 13G-L PACKAGE



Purchase Price

\$10,000

Includes GST
Excludes on-road costs of \$595

Finance may be available on this vehicle. Ask one of our friendly staff for more information.

Gain peace of mind with Mechanical Breakdown Insurance. **Ask us how.**

Top features

- » ABS Brakes
- » Air Conditioning
- » Electric Windows
- » Power Steering

Body Style

5 door, Hatchback

Odometer

21,617 km

Engine

1300 cc

Fuel Type

Petrol

Transmission

Automatic, 2WD

Wheels

-

VIN

-

Interior

Gray

Safety

-

Reg No.

-

Ext Colour

Black

History

-

Seats

5 seats

CO2 Emissions

-

Energy Economy

-

Stock ID: 14060



JAN JAPAN MOTORS

Jan Japan - East Tamaki | Phone 09 972 1204 | Email sales@janjapan.co.nz
10 Progressive Way, East Tāmaki, Auckland 2016, New Zealand
www.janjapan.co.nz



4.31 | 282 reviews