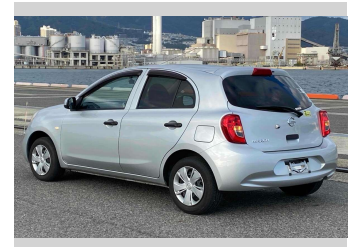
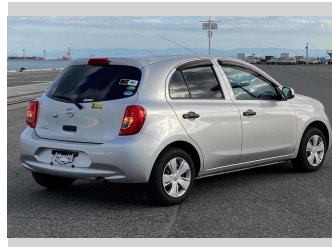
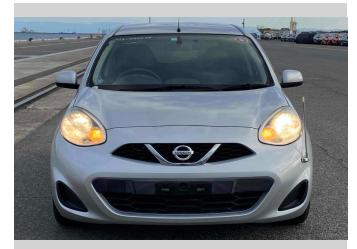
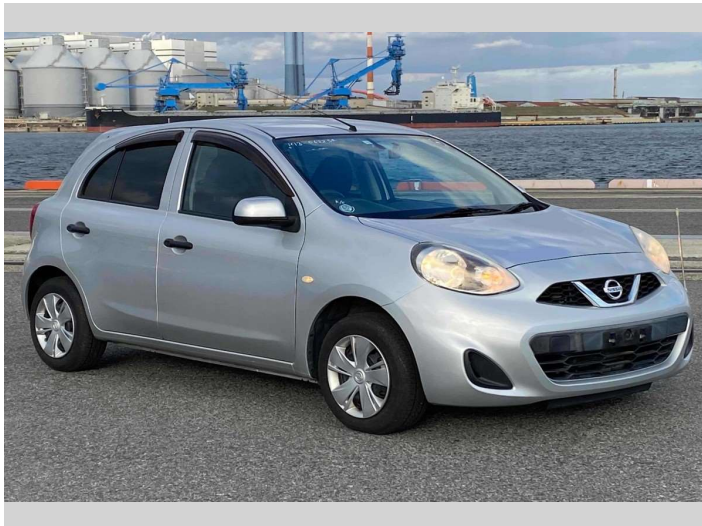


2016 Nissan March S



Purchase Price **POA**

Includes GST
Excludes on-road costs of \$595

Finance may be available on this vehicle. Ask one of our friendly staff for more information.

Gain peace of mind with Mechanical Breakdown Insurance. **Ask us how.**

- Top features**
- » ABS Brakes
 - » Air Conditioning
 - » Electric Windows
 - » Power Steering

Body Style
5 door, Hatchback

Odometer
45,216 km

Engine
1200 cc

Fuel Type
Petrol

Transmission
Automatic, 2WD

Wheels
-

VIN
-

Interior
Gray

Safety
-

Reg No.
-

Ext Colour
Silver

History
-

Seats
5 seats

CO2 Emissions
-

Energy Economy
-

Stock ID: 14364



Jan Japan - East Tamaki | Phone 09 972 1204 | Email sales@janjapan.co.nz
10 Progressive Way, East Tāmaki, Auckland 2016, New Zealand
www.janjapan.co.nz

4.30 | 284 reviews