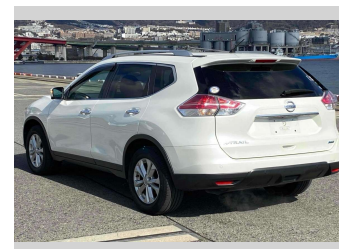
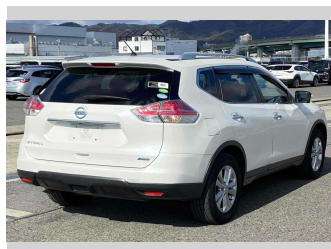


# 2015 Nissan X-Trail 20X Emergency Brake Package



**Purchase Price** **\$16,680**  
Includes GST  
 Excludes on-road costs of \$595

Finance may be available on this vehicle. Ask one of our friendly staff for more information.

Gain peace of mind with Mechanical Breakdown Insurance. **Ask us how.**

- Top features**
- » 360 Camera
  - » ABS Brakes
  - » Air Conditioning
  - » Car Stereo
  - » CD Player
  - » Electric Windows
  - » Fog Lights
  - » Heated Seats
  - » Keyless Entry
  - » Lane Keep Assist
  - » Parking sensors
  - » Power Steering
  - » Pre-Collision System
  - » Push Start
  - » Spoiler
  - » Winker Mirror

Body Style  
**5 door, SUV / 4x4**

Odometer  
**91,907 km**

Engine  
**2000 cc**

Fuel Type  
**Petrol**

Transmission  
**Automatic, 2WD**

Wheels  
 -

VIN  
 -

Interior  
**Gray**

Safety  
 -

Reg No.

-

Ext Colour  
**Pearl White**

History

-

Seats  
**7 seats**

CO2 Emissions

-

Energy Economy

-

**Stock ID: 15138**



Jan Japan - Wholesale | Phone 09 972 1204 | Email sales@janjapan.co.nz  
 10 Progressive Way, East Tāmaki, Auckland 2016, New Zealand  
 www.janjapan.co.nz

