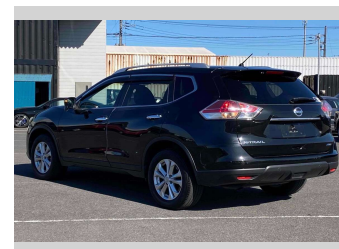
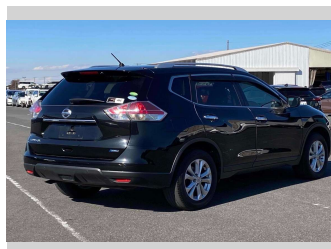
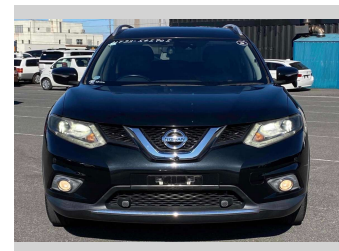
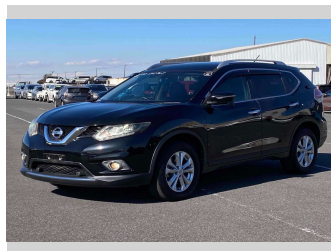


2016 Nissan X-Trail 20X Emergency Brake Package



Purchase Price **\$18,690**

Includes GST
Excludes on-road costs of \$595

Finance may be available on this vehicle. Ask one of our friendly staff for more information.

Gain peace of mind with Mechanical Breakdown Insurance. **Ask us how.**

- Top features**
- » ABS Brakes
 - » Air Conditioning
 - » Alarm
 - » Alloys
 - » Buttons
 - » Car Stereo
 - » Central Locking
 - » Dark Interior
 - » Digital Dash
 - » Electric Windows
 - » Face Lift Model
 - » Fog Lights
 - » Folding Side Mirrors
 - » Keyless Entry
 - » Parking Sensors
 - » Power Steering
 - » Reversing Camera
 - » Spoiler

Body Style	5 door, SUV / 4x4	Reg No.	-
Odometer	72,170 km	Ext Colour	Black
Engine	2000 cc	History	-
Fuel Type	Petrol	Seats	7 seats, Leather
Transmission	Automatic, 4WD	CO2 Emissions	-
Wheels	-	Energy Economy	-
VIN	-		
Interior	Gray, Leather		
Safety	-		

Stock ID: 14836



Jan Japan - Mt Wellington | Phone 09 278 9643 | Email sales.mtw@janjapan.co.nz
5 Fraser Road, Mount Wellington, Auckland 1072
www.janjapan.co.nz